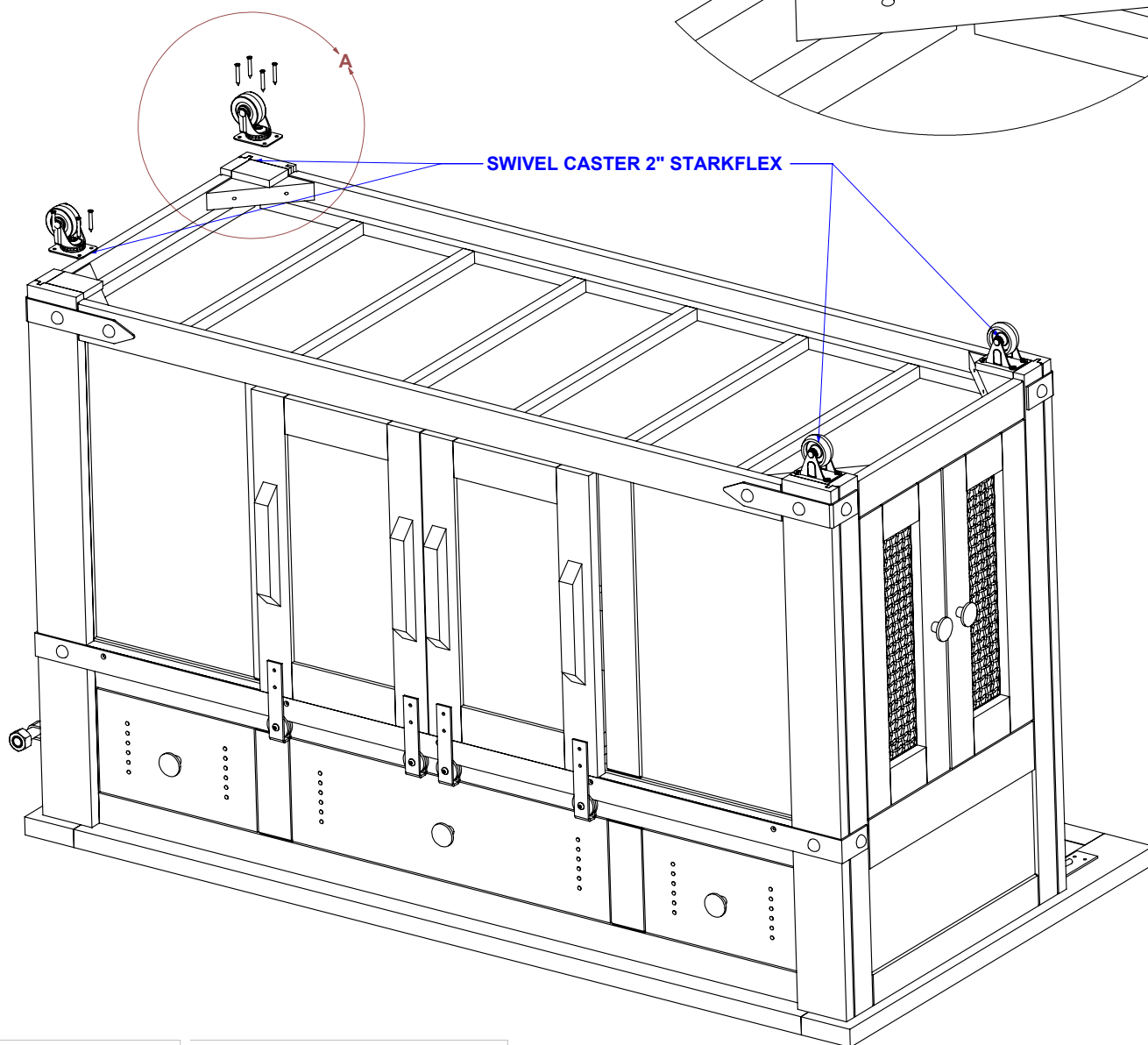
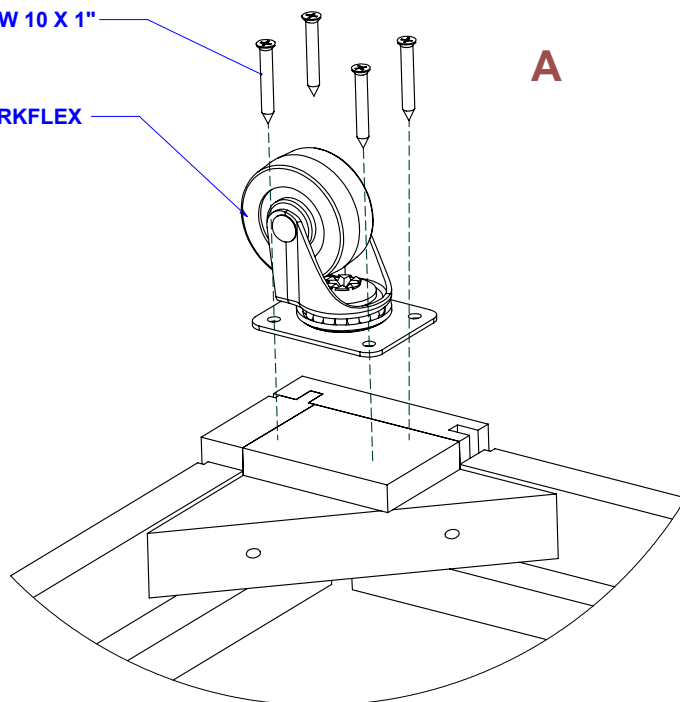


DRYWALL CSREW 10 X 1"

SWIVEL CASTER 2" STARKFLEX

A

- WITH SOME ONE ELSE'S HELP, PLACE THE ISLAND UPSIDEDOWN OVER A FLAT AND CLEAN SURFACE.
- PLACE THE CASTER IN THE FOUR CORNERS AND INSERT THE SCREWS AS SHOWN IN FIG A.
- WHEN ALLTHE CASER ARE IN PLACE, TURN THE ISLAND WITH SOME ONE ELSE'S HELP OVER CAREFULLY.



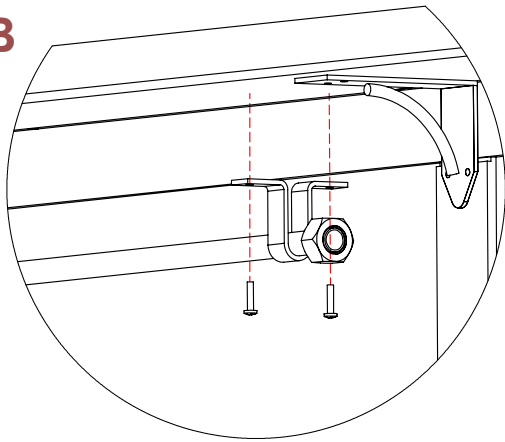
ifd

INTERNATIONAL
FURNITURE DIRECT, LLC

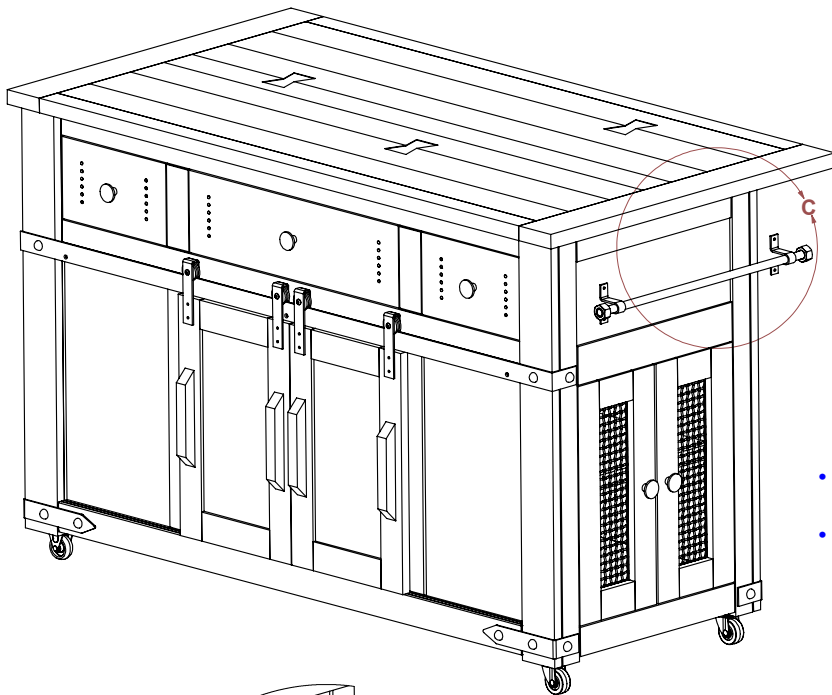
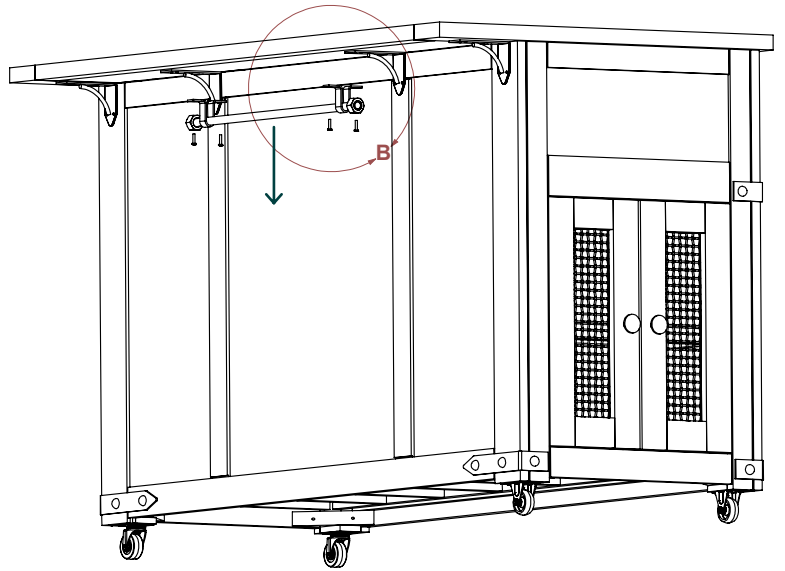
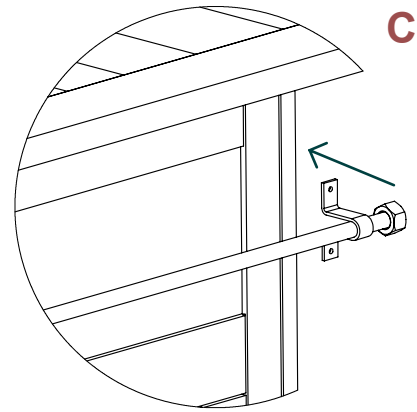
ASSEMBLING INSTRUCTIONS

I-KSL-E003

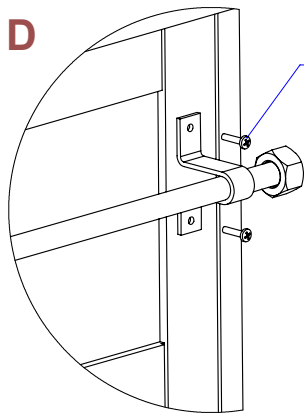
DESCRIPTION	#
SWIVEL CASTER 2" STARKFLEX	4
DRYWALL SCREWS 10 x 1"	16

B

- TO INSTALL THE TOWEL RAIL FIRST YOU SHOULD TO REMOVE, THIS IN THE UNDER COVER, WITH THE ASSISTANCE OF THE SCREWDRIVER REMOVE THE SCREWS. AS SHOWN IN PICTURE B

**C**

- WHEN YOU REMOVE THE TOWEL RAIL YOU CAN INSTALL IN THE RIGHT POSITION.
- IN ONE SIDE OF THE KITCHEN ISLAND HAVE A SMALL HOLES, THIS HOLES HELPTO ALIGN THE TOWEL RAIL, WHEN ARE ALIGN INSERT THE SCREWS AS SHOWN IN THE PICTURE C AND D.

D

PHILLIPS PAN HEAD 8 X 3/4"

