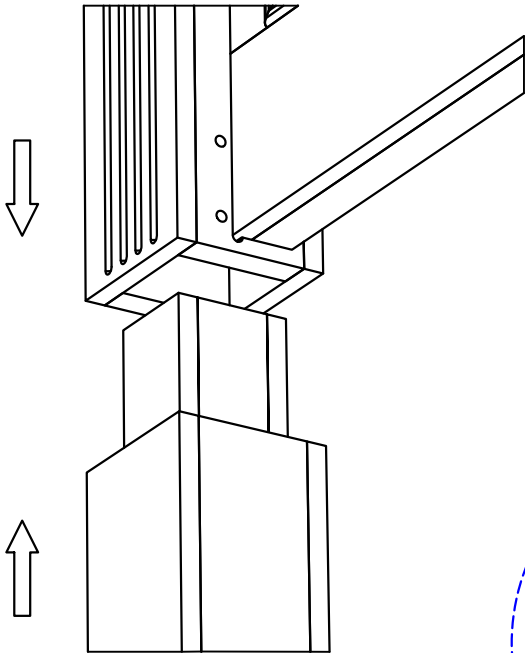
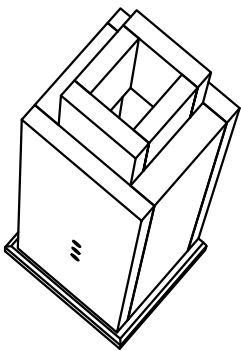
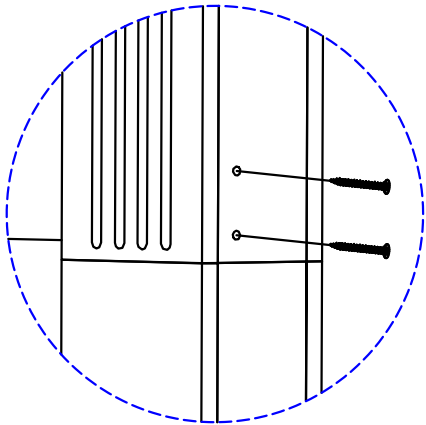


INSTRUCTIONS:

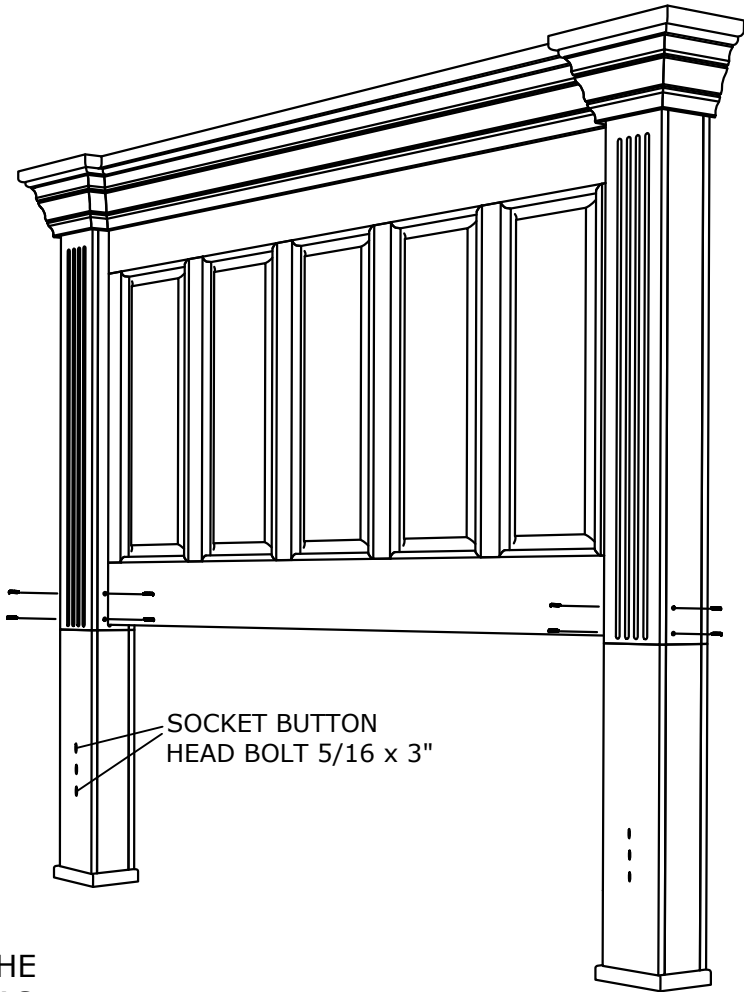
PLACE THE LEGS (LEFT OR RIGHT) ON EACH SIDE OF THE HEADBOARD MAKING SURE TO PLACE THEM ON THE CORRECT SIDE.
AT THE BACK OF THE HEADBOARD AND THE BACK OF EACH LEG THERE IS A COLORED LABEL.
EACH LEG MUST BE ASSEMBLED TO THE SIDE OF THE HEADBOARD WITH ITS MATCHING COLOR.



THE LEG SHOULD BE PLACED AS SHOWN ON DIAGRAM, APPLYING FORCE IN THE CORRECT DIRECTION.



INSERT THE SCREWS AS SHOWN IN THE DIAGRAM



ONCE THE LEG IS INSTALLED, IT MUST BE COMPLETELY ALIGNED AND SIT FLUSH WITH THE HEADBOARD.

HARDWARE	
DESCRIPTION	#PCS
FLAT HEAD SCREW 12 X 2-1/2"	8
ALLEN KEY 3/16	1

NOTE: ALLEN KEY WILL BE USED TO UNSCREW BOLTS IN I-RLS-C001

PRODUCT IMAGE SHOWN IS FOR ILLUSTRATIVE PURPOSES ONLY, SHOULD NOT BE TAKEN AS REFERENCE POINT



ASSEMBLY INSTRUCTIONS

I-HBD-C001