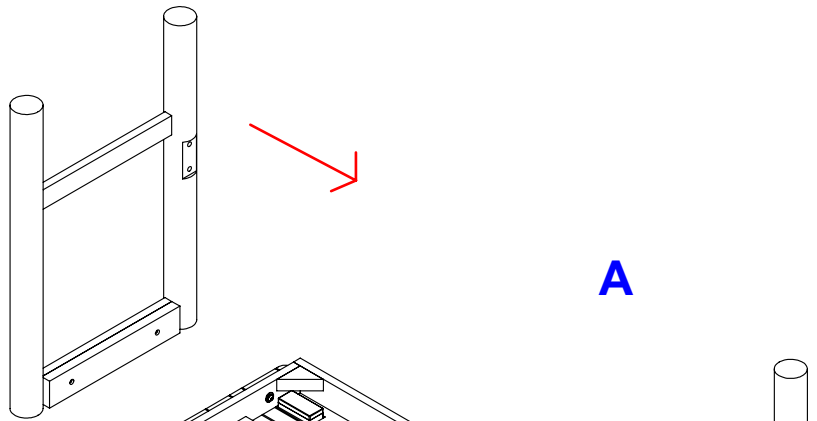


STEP 1

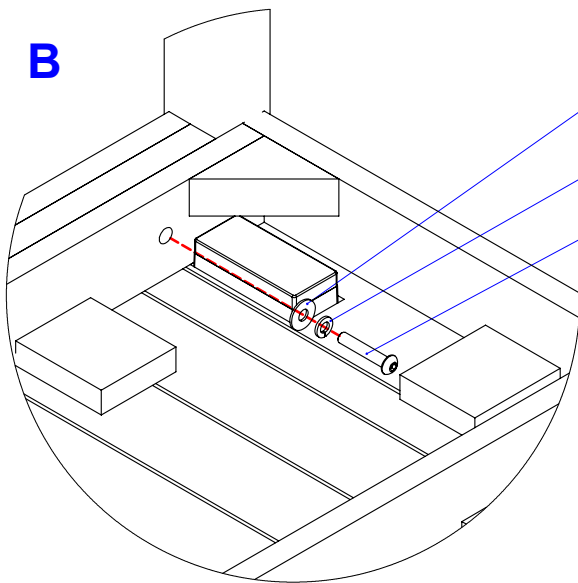
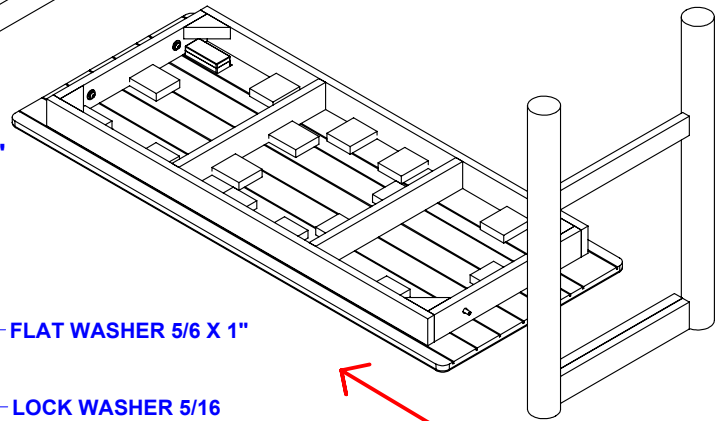
WITH THE HELP OF SOMEONE ELSE TURN THE DESK AND PLACE THE TOP ON A FLAT SURFACE ALING THE LATERALS HOLES WITH THE APRON HOLES AS SHOWN IN FIGURE "A"



A

STEP 2

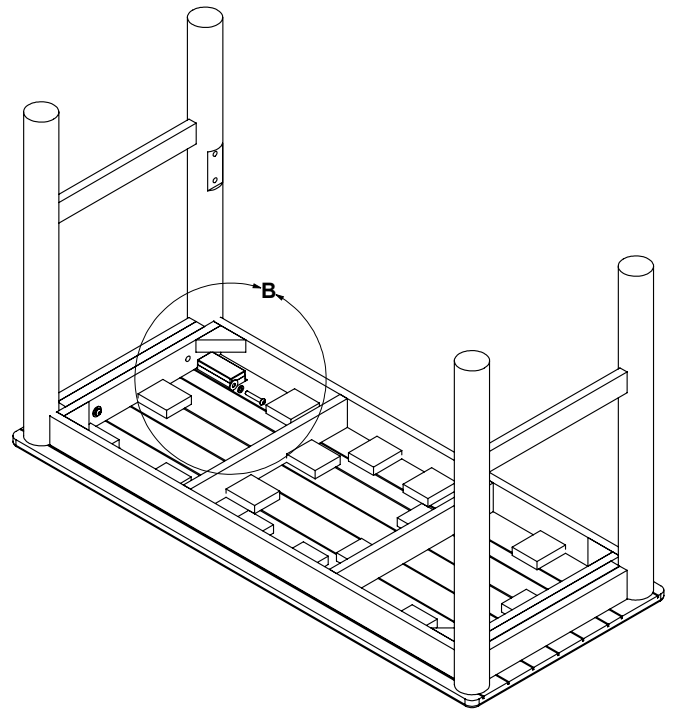
ONCE THE HOLES HAVE BEEN MATCHED PLACE THE SCREWS AND THE WASHERS AS SHOWN IN FIGURE "B" AND TIGHTEN THE SCREWS INTO THE LATERALS



FLAT WASHER 5/6 X 1"

LOCK WASHER 5/16

BUTTON SOCKET SCREW 5/16 x 1-3/4"

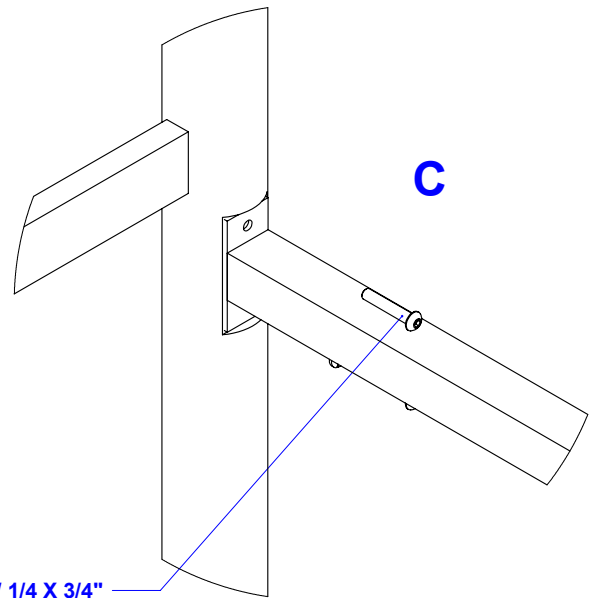
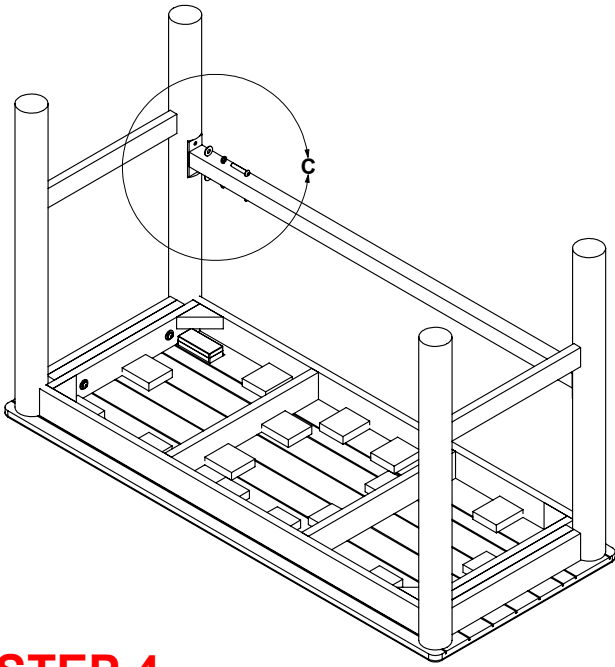
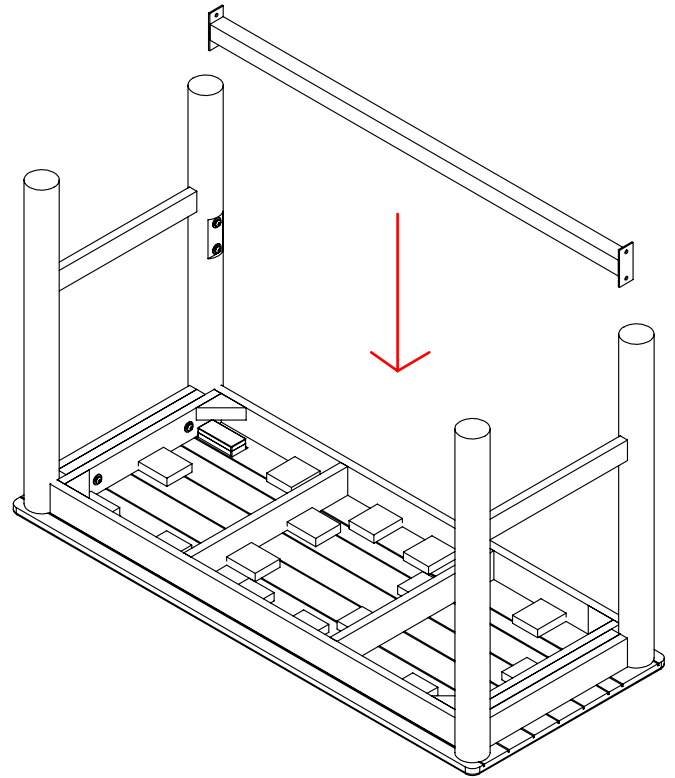


B

DESCRIPTION	#
BUTTON SOCKET SCREW 5/16 X 1-3/4"	4
LOCK WASHER 5/16	4
FLAT WASHER 5/16 X 1"	4
UNION SCREW 1/4 X 3/4"	4
ALLEN KEY 3/16	1

STEP 3

PLACE THE CROSSBAR ALING WITH THE BACK LEGS HOLES AS SHOWN IN FIGURE "C" PLACE THE SCREWS AND THE WASHERS AND TIGHTEN THE SCREWS INTO THE LEGS



STEP 4

FINALLY GET THE DESK UP RIGHT AND PLACE IT IN THE DESIRED LOCATION

NOTE: REMEMBER THAT ALL THE SCREWS ARE AND AT THE END THAT ALL THE SCREWS HAVE BEEN IN THEIR POSITION WE ADJUST.

DESCRIPTION	#
BUTTON SOCKET SCREW 5/16 X 1-3/4"	4
LOCK WASHER 5/16	8
FLAT WASHER 5/16 X 1"	4
UNION SCREW 1/4 X 3/4"	4
ALLEN KEY 3/16	1



ASSEMBLING INSTRUCTIONS

I-DSK-E017

ITEM	DESCRIPTION	#
	TORNILLO ALLEN 5/16 X 1-3/4"	4
1RON011	RONDANA DE PRESION 5/16	4
1RON003	RONDANA PLANA 5/16 X 1"	4
1TOR038	TORNILLO UNION 1/4 X 3/4" (19 MM) (ORO VIEJO)	4
1HER251	LLAVE ALLEN 5/32	1



INTERNATIONAL
FURNITURE DIRECT, LLC

**ASSEMBLING
INSTRUCTIONS**

I-DSK-E017