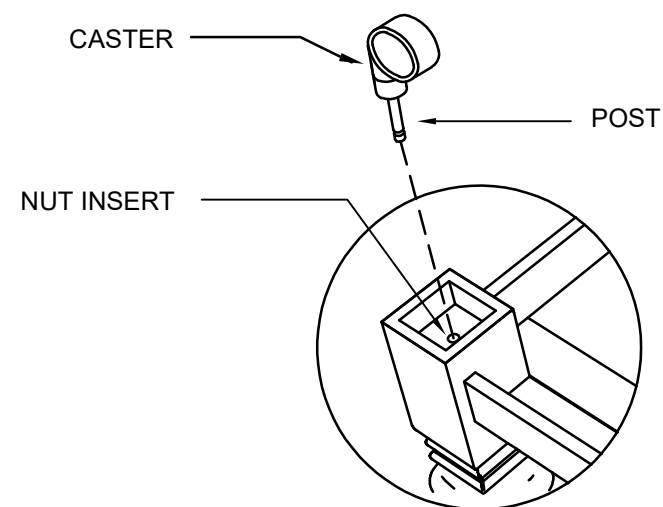


HARDWARE	
DESCRIPTION	# PCS
CASTER	4



INSTRUCTIONS:

TO ATTACH THE CASTERS TO THE TABLE

1.- INSERT THE POST OF THE CASTER INTO THE NUT INSERT AND PUSH FIRMLY

PRODUCT IMAGE SHOWN IS FOR ILLUSTRATIVE PURPOSES ONLY, SHOULD NOT BE TAKEN AS REFERENCE POINT



ASSEMBLY INSTRUCTIONS

I-CKT-C002